

Manually Configuring Windows XP for Wireless PittNet

Overview

The University of Pittsburgh's Wireless PittNet service provides wireless network access to all University of Pittsburgh students, faculty, and staff. Windows users can connect to Wireless PittNet in one of two ways. The recommended method is to use the *PittNet Complete* CD to automatically configure your computer to connect to Wireless PittNet with the Cisco Secure Services client. You can also use the instructions provided below to manually configure your Windows XP computer to use Wireless PittNet.

Before You Get Started

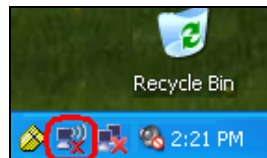
Before connecting your Windows XP computer to the wireless network, you will need the following:

- 802.11 b/g-compliant wireless network card that supports the 802.1x standard and WPA (Wi-Fi Protected Access)
- A valid University Computer Account

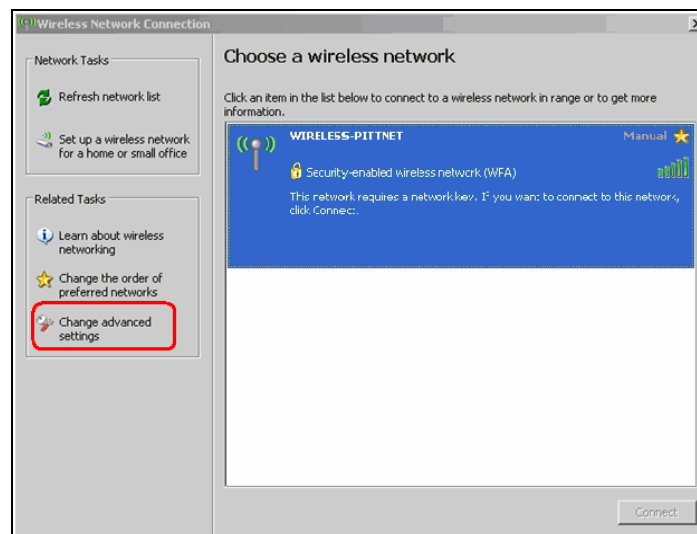
Configuring the Windows XP Client

To configure the Windows XP client for Wireless PittNet, complete the following steps.

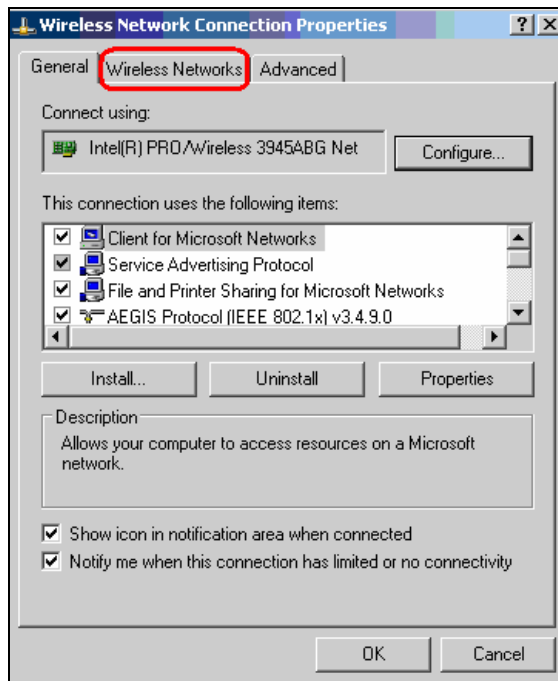
1. Double click on the **Wireless Network Connection** icon in the system tray of the computer (located near the time display in the bottom right corner of your screen).



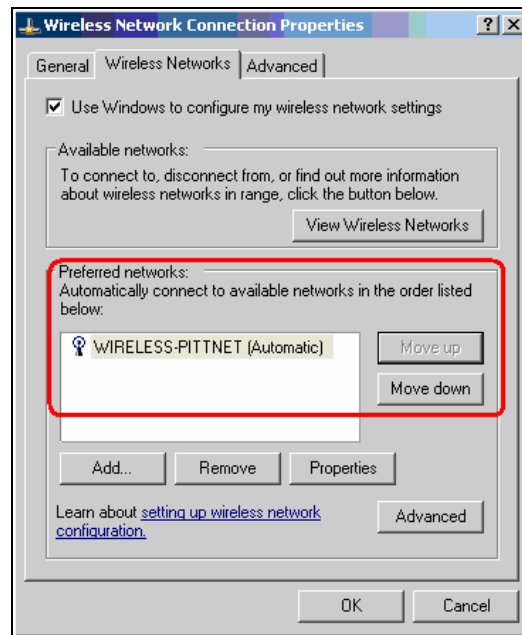
2. In the **Wireless Network Connection** window, click on **Change advanced settings**.



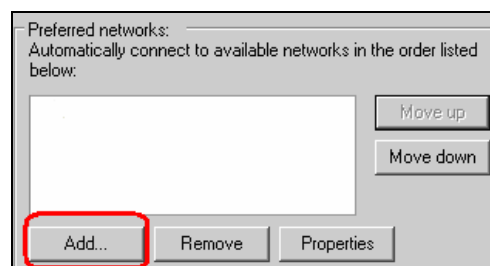
3. Click the **Wireless Networks** Tab.



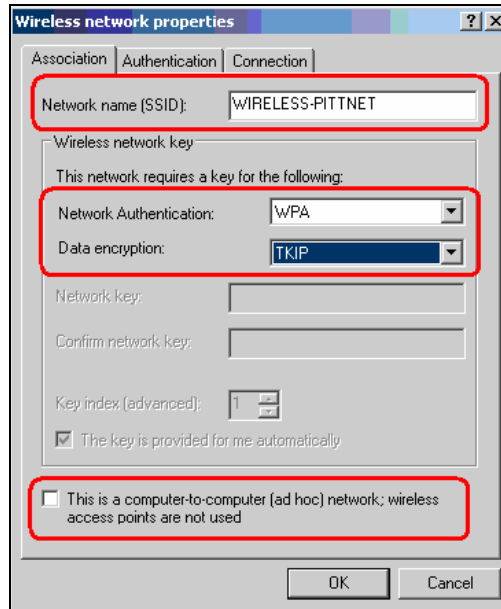
4. Check to see if **WIRELESS-PITTNET** displays under the **Preferred networks** list. If it does, highlight it, click the **Properties** button, and proceed to **step 10**. If it does not, proceed to **step 5**.



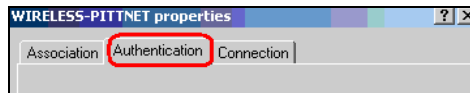
5. If **WIRELESS-PITTNET** is not listed under **Preferred networks**, click the **Add** button.



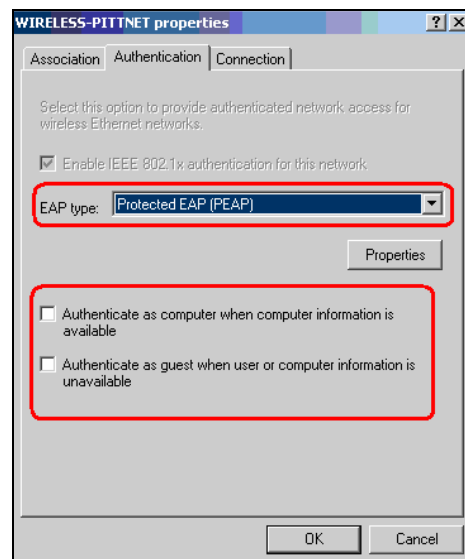
6. In the **Network name (SSID)** field, enter **WIRELESS-PITTNET**.
7. In the **Network Authentication** field, select **WPA**.
8. In the **Data encryption** field, select **TKIP**.
9. Make sure the box is **unchecked** next to **This is a computer to computer (ad-hoc) network; wireless access points are not used**.



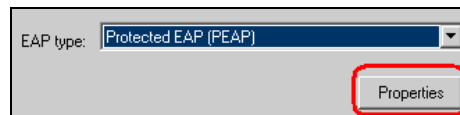
10. Click the **Authentication** tab.



11. In the **EAP type:** field, select **Protected EAP (PEAP)**.
12. Make sure the box is **unchecked** next to **Authenticate as computer when computer information is unavailable**.
13. Make sure the box is **unchecked** next to **Authenticate as guest when user or computer information is unavailable**.



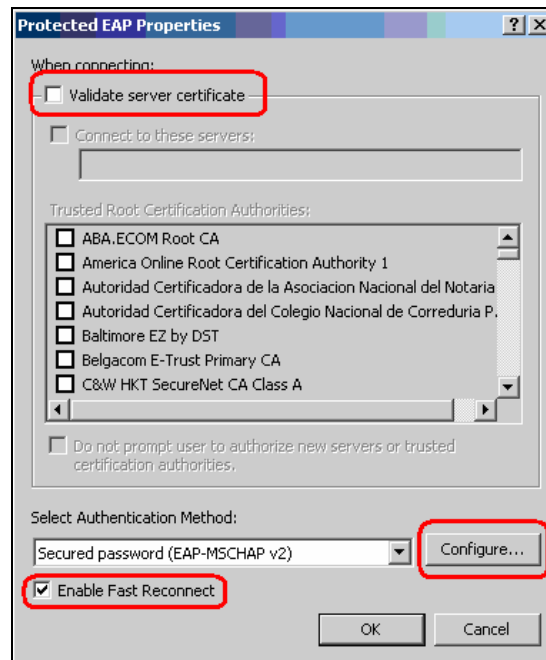
14. Click the **Properties** button.



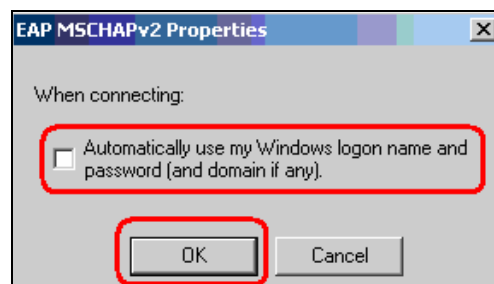
15. Make sure the box is **unchecked** next to **Validate Server Certificate**.

16. **Check** the box next to **Enable Fast Reconnect**.

17. Click the **Configure** button.

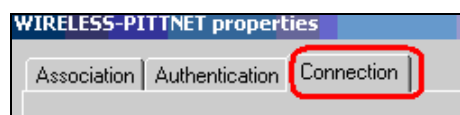


18. **Uncheck** the box next to **Automatically use my Windows logon name and password (and domain if any)**, and then click **OK**.

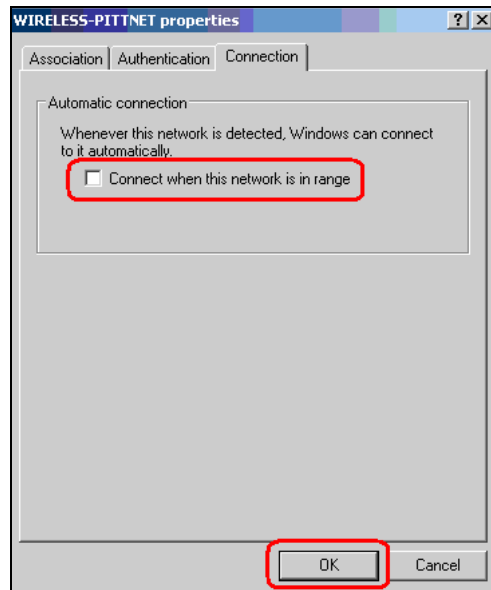


19. Click **OK** to exit the **Protected EAP Properties** window.

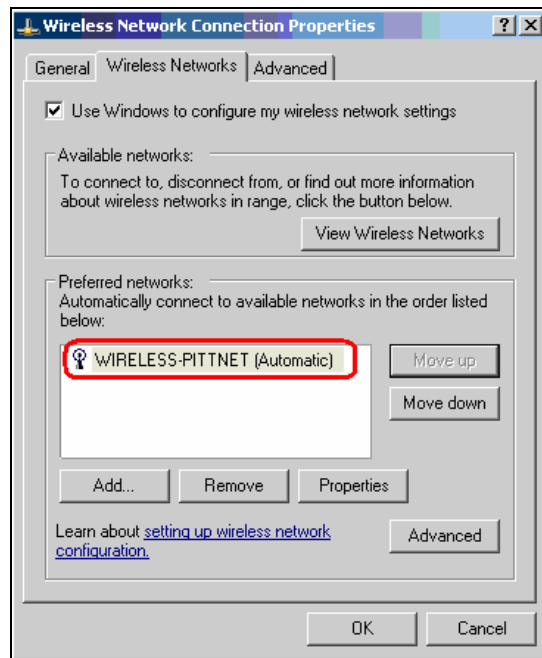
20. Click the **Connection** tab.



21. If you would like to connect to Wireless PittNet automatically when you are in a location with Wireless PittNet service, check the box next to **Connect when this network is in range**. If you do not want to automatically connect, leave this box unchecked.
22. Click **OK** to exit the **Wireless Network Properties** window.



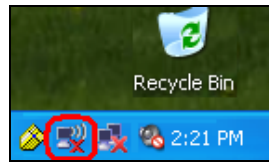
23. **WIRELESS-PITTNET** should now display in the **Preferred Networks** list. Click **OK** to exit. You have successfully configured the Windows XP client.



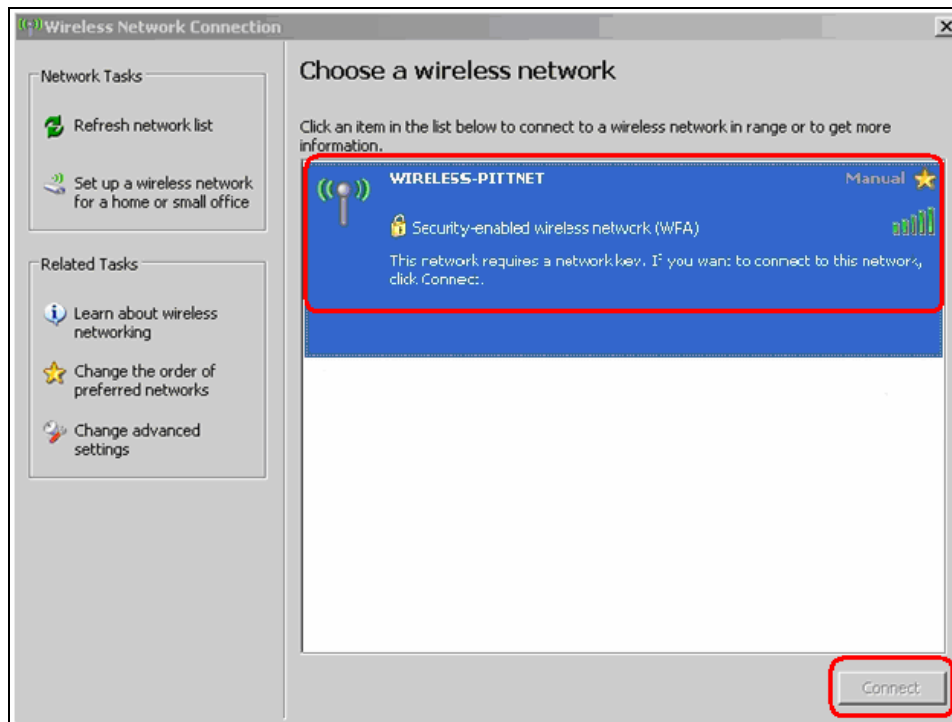
Connecting to Wireless PittNet

After you have configured the Windows XP client, just follow these steps each time you want to connect to Wireless PittNet. Remember to take your computer in the vicinity of one of the wireless access locations listed on **wireless.pitt.edu** before you begin

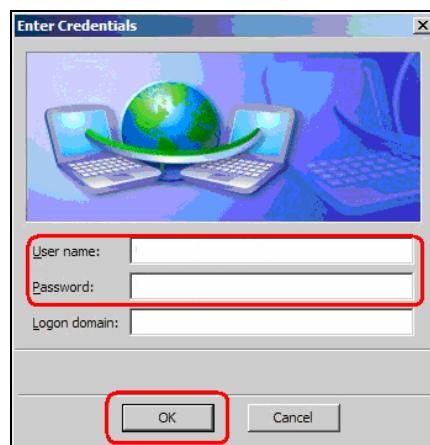
1. Double click on the **Wireless Network Connection** icon in the system tray of the computer (located near the time display in the bottom right corner of your screen).



2. Highlight **WIRELESS PITTNET** in the **Wireless Network Connection** window and click **Connect**.



3. Enter your University Computer Account username and password where prompted. Leave the **Logon domain** field blank, and click **OK**.

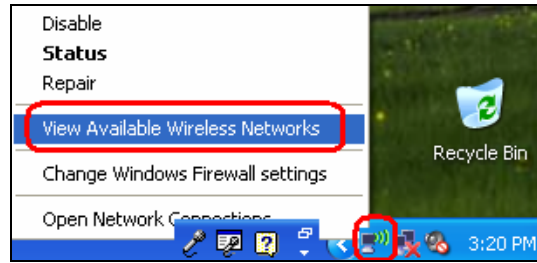


4. You have successfully connected to Wireless PittNet!

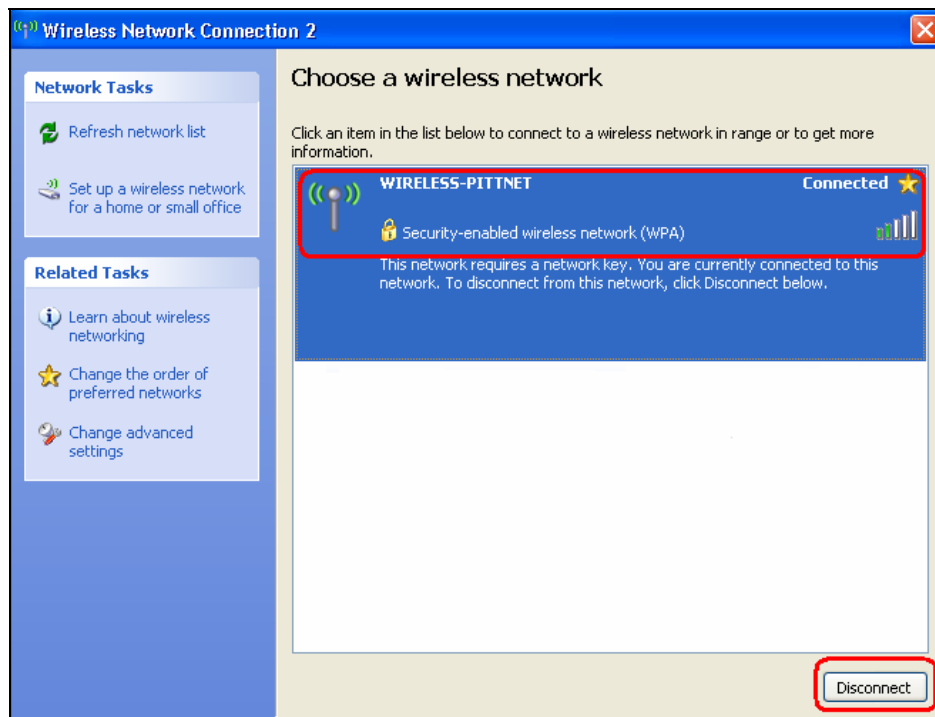
Disconnecting from Wireless PittNet

To disconnect from Wireless PittNet, complete the following steps.

1. Right click the **Wireless Network Connection** icon and select **View Available Wireless Networks**.



2. Highlight **WIRELESS-PITNET** and click **Disconnect**.



Questions and Feedback

The Technology Help Desk at 412 624-**HELP** [4357] is available 24 hours a day, seven days a week to answer your technology-related questions. Questions can also be submitted via the Web at technology.pitt.edu.