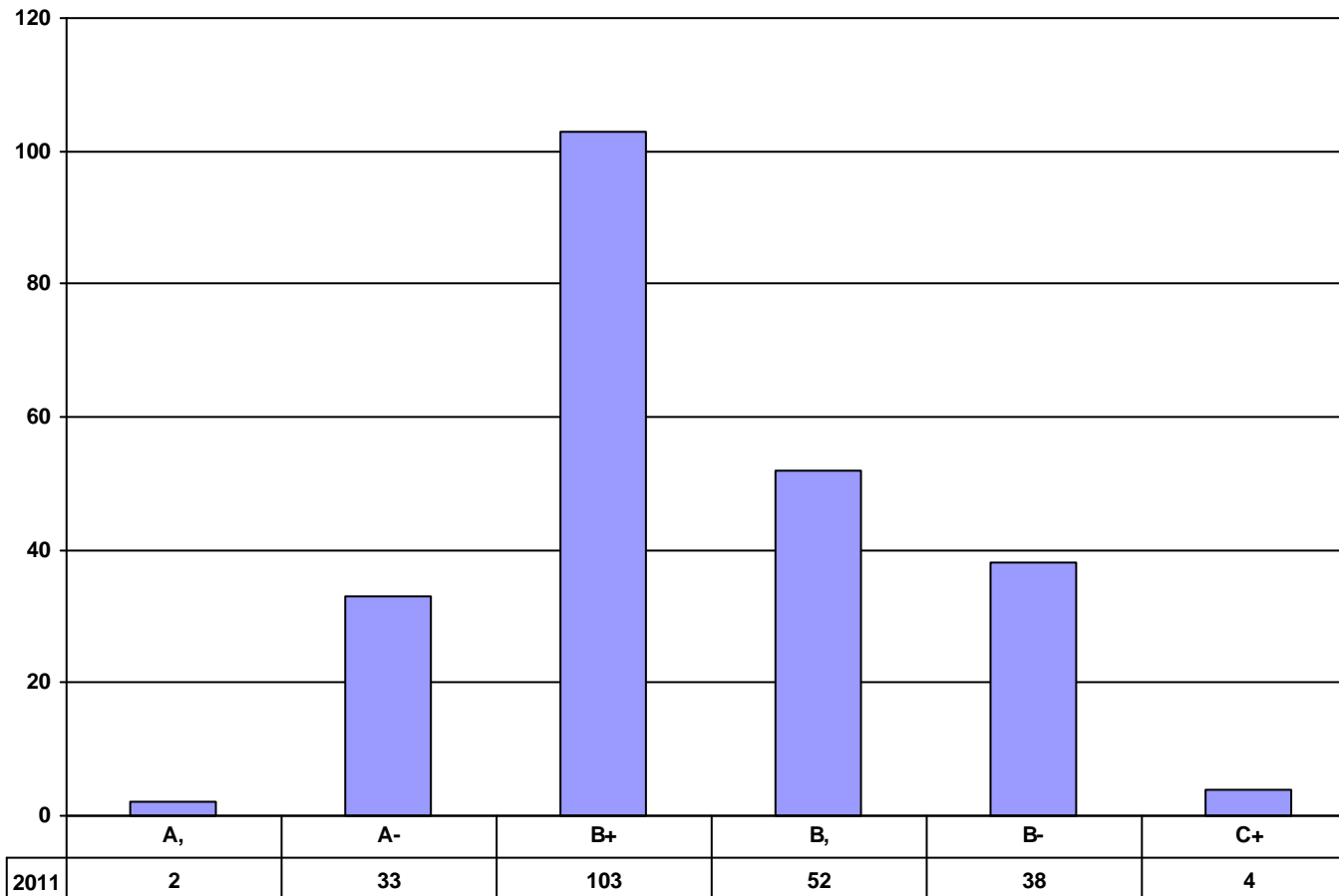




*School of Law*  
**Grade Distributions - Class of 2011**  
*(Student Total - 232)*



Grade Range A = 3.876 - 4.000 A- = 3.501 - 3.875 B+ = 3.126 - 3.500 B = 2.876 - 3.125 B- = 2.501 - 2.875 C+ = 2.126 - 2.500 C = 1.876 - 2.125 C- = 1.376 - 1.875